

Construct 2.0m footpath per typical section

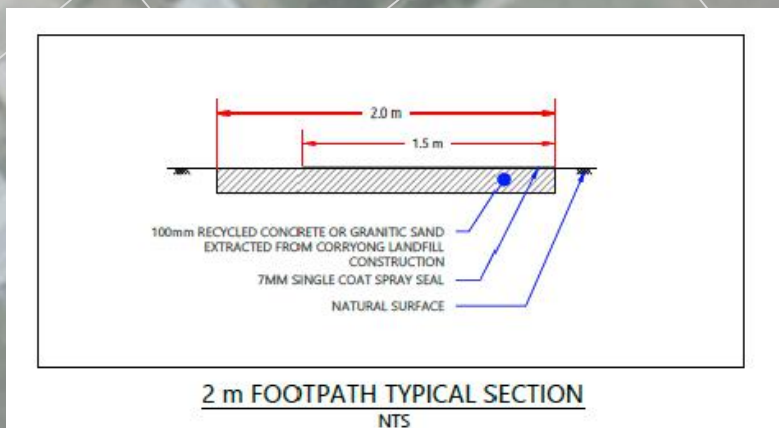
New 2.4m DN600 RCP culvert with headwalls

New 2.4m DN600 RCP culvert with headwalls

Construct concrete crossover

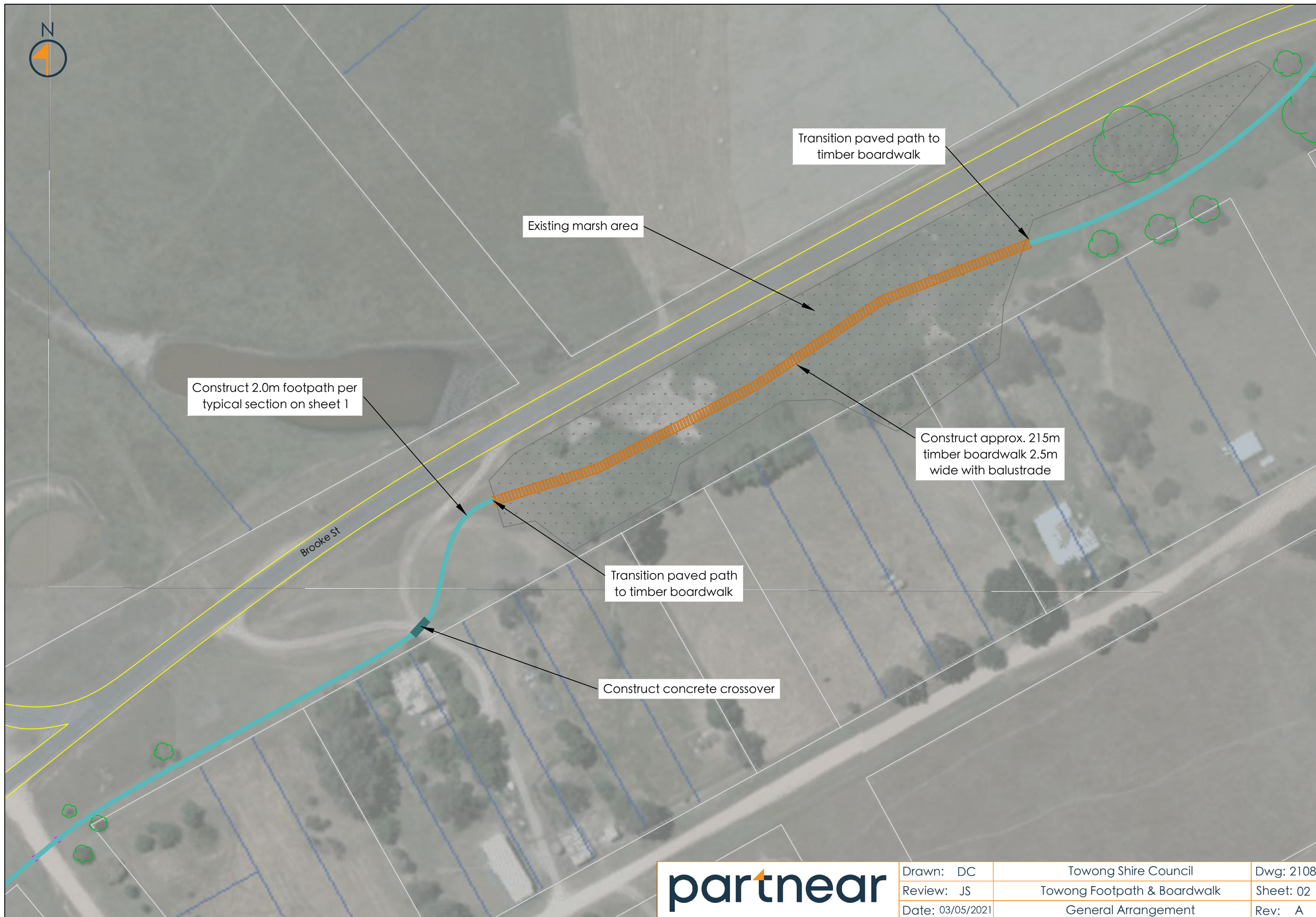
Extent of footpath works opposite PO Boxes

Construct concrete crossover



Drawn: DC	Towong Shire Council	Dwg: 2108
Review: JS	Towong Footpath & Boardwalk	Sheet: 01
Date: 03/05/2021	General Arrangement	Rev: A





Construct 2.0m footpath per typical section on sheet 1

Existing marsh area

Transition paved path to timber boardwalk

Construct approx. 215m timber boardwalk 2.5m wide with balustrade

Brooke St

Transition paved path to timber boardwalk

Construct concrete crossover



Drawn: DC	Towong Shire Council	Dwg: 2108
Review: JS	Towong Footpath & Boardwalk	Sheet: 02
Date: 03/05/2021	General Arrangement	Rev: A





Construct 2.0m footpath per typical section on sheet 1

Extent of footpath works at Murray River Reserve

Murray River

Brooke St

Sullivan St

New 2.4m DN600 RCP culvert with headwalls



Drawn: DC	Towong Shire Council	Dwg: 2108
Review: JS	Towong Footpath & Boardwalk	Sheet: 03
Date: 03/05/2021	General Arrangement	Rev: A