



CORRYONG SKATEPARK DRAFT CONCEPT PRG

SEPT 2023

CONVIC

AGENDA

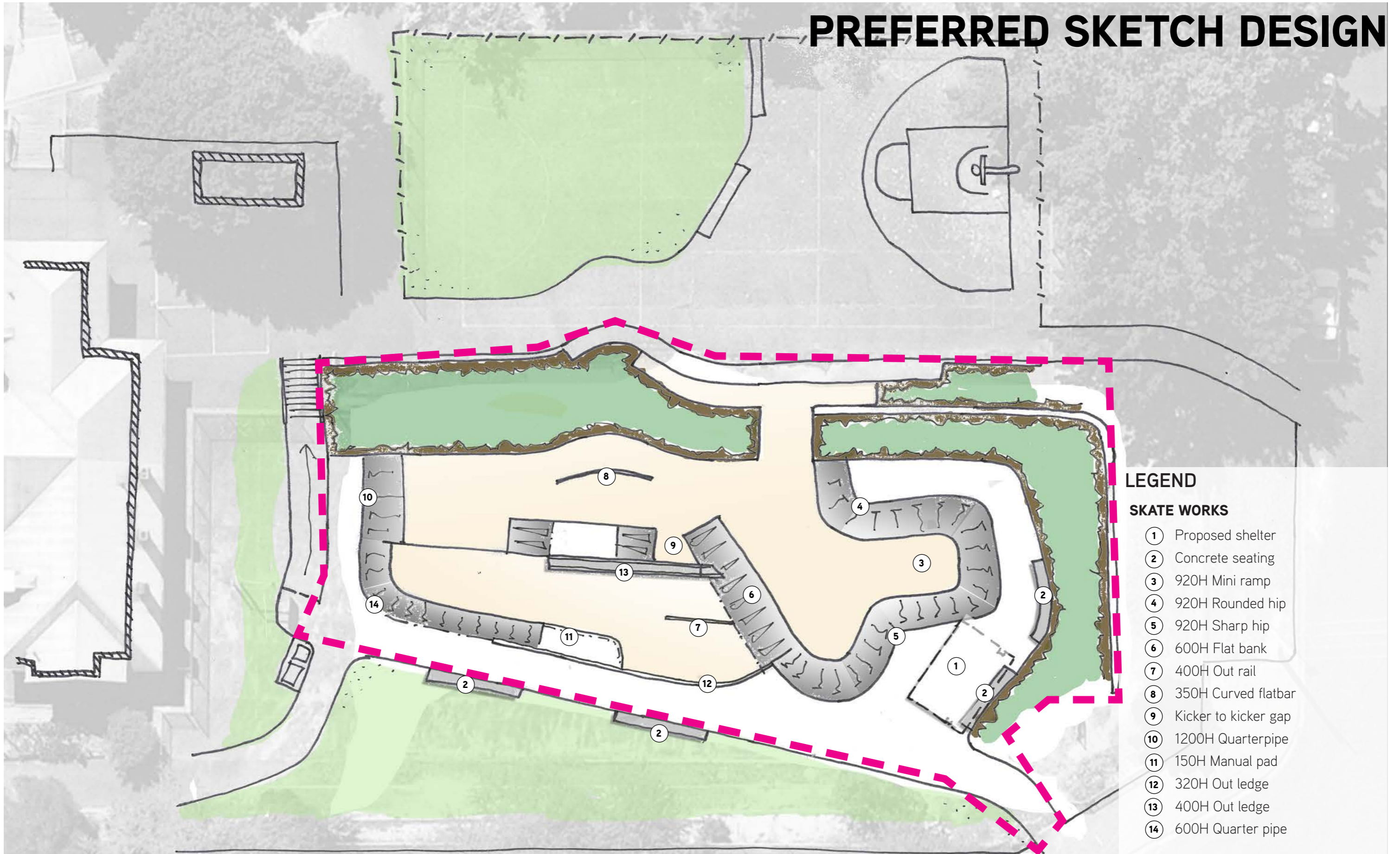
- 1 | GOALS OF TODAY
- 2 | DEVELOPMENT FROM SKETCH
- 3 | DRAFT CONCEPT
- 4 | 3D RENDERS
- 5 | SUMMARISE FEEDBACK



GOALS OF TODAY

- 1 | FEEDBACK ON OVERALL LAYOUT
- 2 | LANDSCAPE AMENITY FEATURES
- 3 | SPECIFIC SKATE OBSTACLES
- 4 | FUTURE MASTERPLAN WORKS
- 5 | THEMING

PREFERRED SKETCH DESIGN

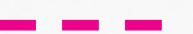


LEGEND

SKATE WORKS

- ① Proposed shelter
- ② Concrete seating
- ③ 920H Mini ramp
- ④ 920H Rounded hip
- ⑤ 920H Sharp hip
- ⑥ 600H Flat bank
- ⑦ 400H Out rail
- ⑧ 350H Curved flatbar
- ⑨ Kicker to kicker gap
- ⑩ 1200H Quarterpipe
- ⑪ 150H Manual pad
- ⑫ 320H Out ledge
- ⑬ 400H Out ledge
- ⑭ 600H Quarter pipe

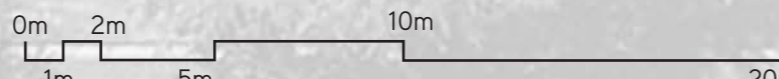
EXTENT OF WORKS



CLIENT:

 towongshire
innovation · technology · sustainability

DESIGNER:
CONVIC

SCALE: 1:200 @ A3


PROJECT:
 CORRYONG SKATEPARK

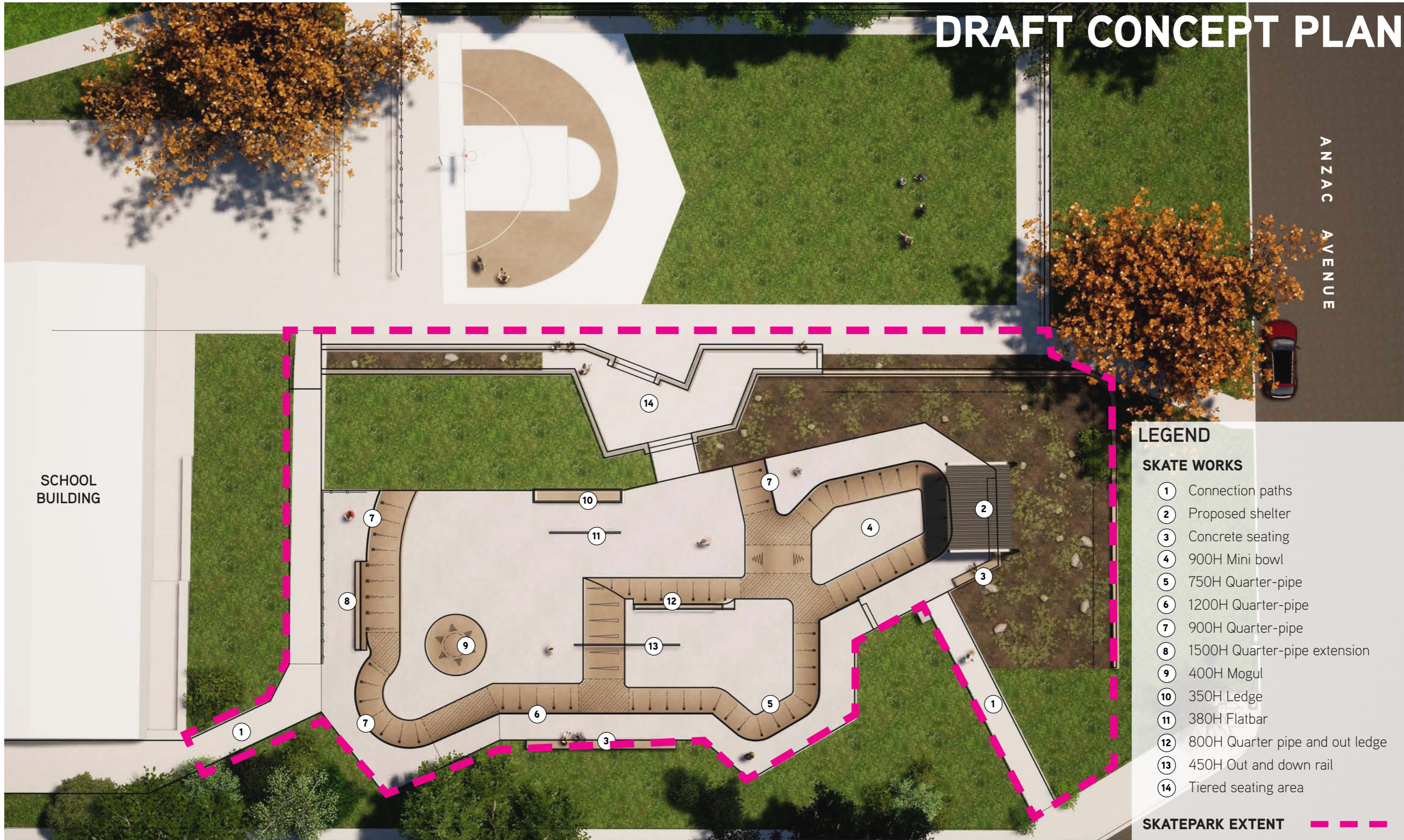
TITLE:
 DRAFT CONCEPT DESIGN

DATE: 07.09.2023
 REV: A

DRAFT CONCEPT PLAN

ANZAC AVENUE

SCHOOL BUILDING



LEGEND

SKATE WORKS

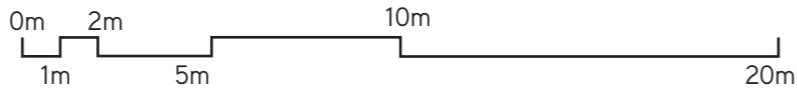
- ① Connection paths
- ② Proposed shelter
- ③ Concrete seating
- ④ 900H Mini bowl
- ⑤ 750H Quarter-pipe
- ⑥ 1200H Quarter-pipe
- ⑦ 900H Quarter-pipe
- ⑧ 1500H Quarter-pipe extension
- ⑨ 400H Mogul
- ⑩ 350H Ledge
- ⑪ 380H Flatbar
- ⑫ 800H Quarter pipe and out ledge
- ⑬ 450H Out and down rail
- ⑭ Tiered seating area

SKATEPARK EXTENT - - - - -

CLIENT:

 towongshire
innovation · technology · sustainability

DESIGNER:


SCALE: 1:200 @ A3


PROJECT:
 CORRYONG SKATEPARK

TITLE:
 DRAFT CONCEPT DESIGN

DATE: 07.09.2023
 REV: A

PARK OVERVIEW



PARK OVERVIEW



PARK OVERVIEW



MINI BOWL



MINI BOWL AND SOCIAL SPACE



STREET OBSTACLES



STREET SECTION OVERVIEW



TRANSITION END



TIERED SEATING AREA



KICK ABOUT SPACE



HALF COURT AREA



SUMMARISE COMMENTS

- 1 | FEEDBACK ON OVERALL LAYOUT
- 2 | LANDSCAPE AMENITY FEATURES
- 3 | SPECIFIC SKATE OBSTACLES
- 4 | FUTURE MASTERPLAN WORKS
- 5 | THEMING