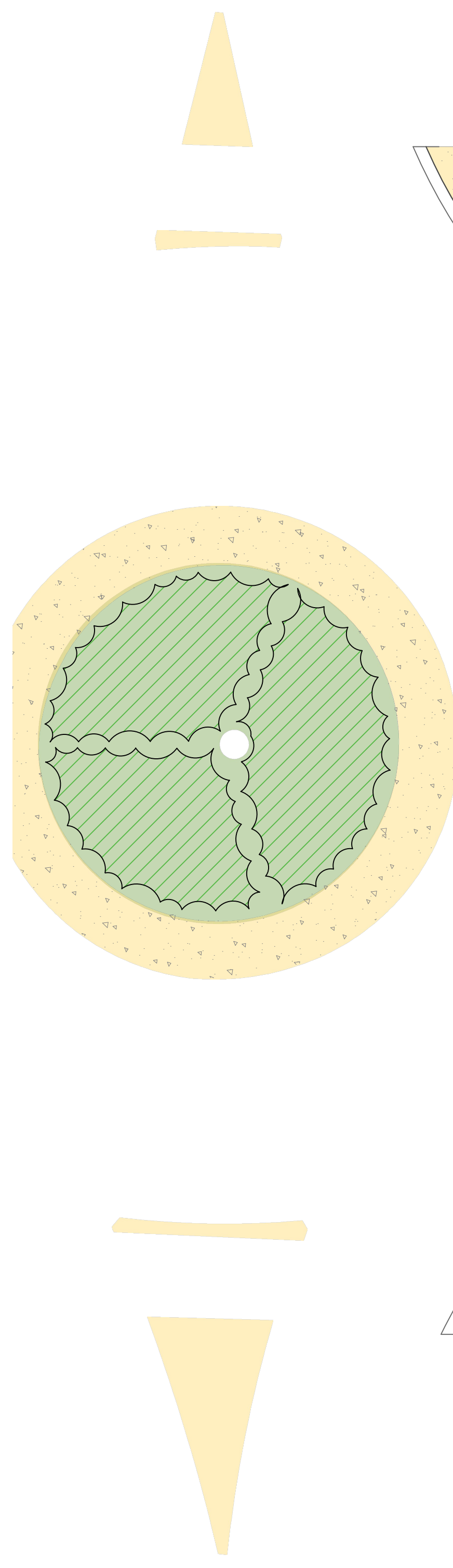
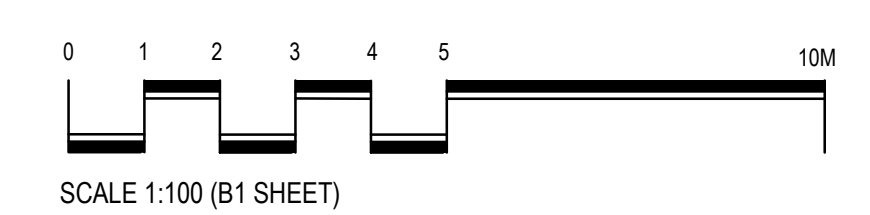


- LEGEND**
-  SUPPLY AND PLANT LARGE DECIDUOUS TREE
  -  SUPPLY AND PLANT SMALL OR NARROW DECIDUOUS TREE
  -  SUPPLY AND PLANT SHRUBS, TUFTING PLANTS OR GROUND COVERS
  -  SUPPLY AND LAY KIKUYU INSTANT TURF OVER PREPARED TOP SOIL
  -  NEW 2000mm x 1600mm STRETCHER BOND SAWCUT JOINTS DRIFTWOOD COLOURED CONCRETE
  -  NEW EUCALYPTUS COLOURED EXPOSED AGGREGATE CONCRETE SURFACE
  -  NEW 210mm x 110mm HYDROSTON BORDER PERMEABLE TO STORMWATER
  -  WSUD PLANTING AS A LEAF SHAPE IN PLAN



**L6 PAVING PLAN**  
**HANSON STREET CORRYONG STREETScape REVITALISATION**  
**TOWONG SHIRE COUNCIL**



**Amendments:**

**Print Issue:**

**Title:** L6 Paving Plan - Hanson Street Corryong Streetscape Revitalisation

**Client:** Towong Shire Council

**MICHAEL SMITH AND ASSOCIATES**  
 Landscape Architecture and Urban Design

Office: 1st floor, 407 Whitehorse Road, Balwyn VIC 3103  
 Postal: 5 Jervis Street, Camberwell VIC 3124  
 Tel: 9830 0414  
 Fax: 9830 2555  
 Email: mike@msalandurb.com.au

Drawn: JG/ST  
 Date: 16.09.2022  
 Project No.: 22-035  
 Cad File:  
 Drawing No.: Sheet 6 of 9

This drawing is the copyright of, and may not be reproduced or transmitted without prior consent of Michael Smith and Associates Landscape Architecture and Urban Design